

# Vetco Gray® 18¾" 20k SHD H-4 Wellhead Connector

## Product Description

HMH presents our 20,000 psi capable, Super Heavy Duty (SHD) H-4® wellhead connector. This design builds on the successful track record of our 18¾" 15,000 psi SHD and expands our H-4 connector family, which has lead the market since 1964. This wellhead connector is a cornerstone of our 20K subsea drilling system, delivering the highest capacity rating in the industry for unmatched performance and reliability.

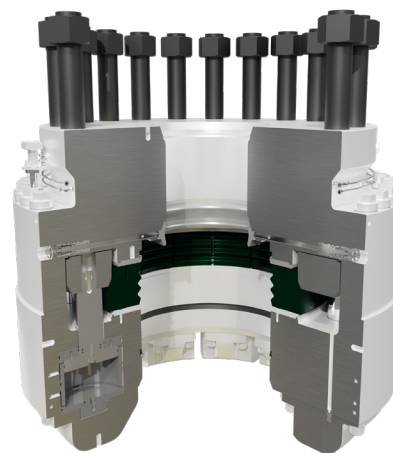
## Product Options<sup>1</sup>

- Third-party certification
- Studded or flanged top connection
- Gasket nudge pins

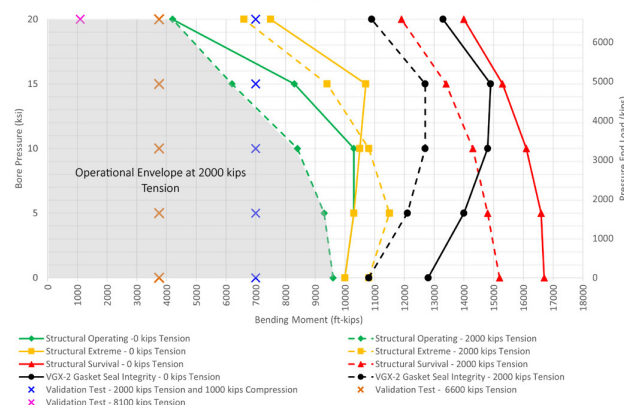
<sup>1</sup> Additional custom options available upon request.

## Key Features

- **Proven technology:** Utilizes the 30" SHD 18-15's proven, 3ksi hydraulically actuated locking mechanism and circuit
- **Increased reliability:** > 99% proven through testing beyond API 16A requirements
- **Increased availability:** > 99% proven through testing beyond API STD 53 requirements
- **Water depth:** 10,000 ft rated
- **Temperature rating:** BGD elastomer rating, T-0/350 metallic rating (per API 16A, 4<sup>th</sup> edition)
- API 16A operational/extreme/survival
- Utilizes our proven VGX-2 gasket, qualified to API 6A and API 16A Annex H (draft)
- Compliant with NACE MR0175 for H2S service
- API 17 ASME section VIII Div 2 with fracture mechanics
- API 16A, 4<sup>th</sup> edition PR2 compliant



Capacity Chart at 350°F per ASME Sec. VIII Div. 2 & API 16A Annex H (Draft)  
18.75"-20ksi Wellhead Connector and Mating 30" SHD H-4 Profile  
HMH 18.75"-20ksi OEC Flange capacity exceeds this chart



### 18-3/4" 20ksi SHD H-4 load capacity envelope

Elastic-plastic load capacity per ASME BPVC Section VIII Division 2

Note: Capacity values at the wellhead for 3,000 psi connector locking pressure

## Technical Specifications

SHD 18-20	
Bore (inches)	18¾
Working pressure (psi)	20,000
Hydraulic circuits	10
Lock fluid volume (gallons)	12.10
Unlock fluid volume (gallons)	15.10
Outside diameter (inches)	66
Weight (pounds)	32,400
Swallow (inches)	32.25
Max hydraulic operator pressure (psi)	3,000
API 16A, 4 <sup>th</sup> edition rating	PR2

