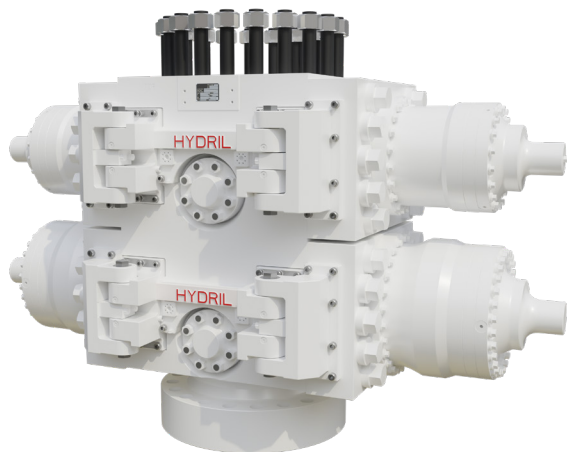


# Hydril® 20k RBOP Blowout Preventer



## Product Description

HMH presents our 18¾" 20,000 psi Hydril® Ram BOP. The design builds on the successful track record of our 18¾" 15,000 psi compact Ram BOP. This next-generation BOP is the industry's first API 16A PR2 qualified, 20k capable RBOP. This is a cornerstone in our 20k subsea drilling system that enables drilling leaders to access offshore reservoirs previously beyond the industry's capabilities. Throughout the design, HMH has partnered with several major operators and drilling contractors, ensuring that the most critical and valuable features are incorporated.

## Product Options<sup>1</sup>

- **Ram block offerings:**
  - Casing shear ram
  - Wireline blind shear ram
  - Hydril® variable ram (4½"-7")
  - Fixed pipe ram (5" to 9⅝")
- Third-party certification
- Single or double cavity bodies
- SSTV cavity available
- Studded or flanged top connection
- Flanged bottom connection
- 22" or 28½" operators
- Alloy 625 inlay on all wellbore sealing surfaces
- API monogram available

<sup>1</sup> Additional custom options available upon request.

## Key Features

- **Easy field maintenance:** fluid hinged doors
- **Locking system:** multi-position lock (MPL) requires no hydraulic or special adjustments
- **Field maintainability:** replaceable top seal seats and bottom wear plates
- **Increased reliability:** fatigue tested to beyond API 16A requirements
- Compliant with NACE MR0175 for H<sub>2</sub>S service
- Designed and validation tested in accordance with API 16A annex H (draft)
- API 16A, 4<sup>th</sup> edition PR2 compliant

## Technical Specifications

RBOP 18-20			
Bore (inches)		18¾	
Working pressure (psi)		20,000	
Max hydraulic operating pressure (psi)	22" Operator	3,000	
	28½" Operator	5,000	
Gal. to close (U.S. gallons)	22" Operator	40.8	
	28½" Operator	68.4	
Gal. to open (U.S. gallons)	22" Operator	38.0	
	28½" Operator	64.8	
Closing ratio	22" Operator	14.7 : 1	
	28½" Operator	18.5 : 1	
Stud face to flange face height (inches)	Single	78	
	Double	119	
Length (inches)	22" Operator	177.75	
	28½" Operator	181.75	
Stud face to flange face weight (pounds)	Single	22" Operator	67,400
		28½" Operator	73,900
	Double	22" Operator	125,200
		28½" Operator	138,200
Closing force (million pounds)	22" Operator	1.14	
	28½" Operator	2.55	
Metallic temperature rating (°F)		0 to 350	
API 16A, 4 <sup>th</sup> edition rating		PR2	

