

DC441

Drilling Catwalk



Product Description

The DC441 Catwalks are engineered for exceptional efficiency and safety in pipe handling. They boast a substantial lift capacity of 16 000 lbs (7 272 kg), making them ideal for heavy-duty tasks. These catwalks can accommodate pipe diameters up to 24 inches (0.61 meters), providing versatility for various applications. With a swift cycle time of 30 seconds up and 30 seconds down (subject to floor height), they rank among the fastest in the industry for their lift capacity. Safety is enhanced by 10-foot (3.1 meters) independent pipe racks that can be remotely raised and lowered, keeping personnel out of harm's way. The modular design allows all three sizes in the series to share common components, reducing costs and simplifying maintenance. Additionally, they can accommodate rig floor heights up to 47 feet (14 meters), offering flexibility for different operational setups. These features make the DC441 Catwalks a top choice for high-capacity and safety-focused operations.

Technical Specifications

| Drilling Catwalk DC441 | |
|--|--|
| Width | 96 in / 2.4 m (Pipe Rack Closed) |
| Deck Height | 42 in / 1.1 m |
| Length | 67 ft |
| Base Unit Weight | 89 192 lbs / 40 542 kg |
| PIPERACKS | |
| Quantity | 3 – Drillers 3 – Off Drillers |
| Length | 10 ft / 3 m per side |
| Capacity | 15 000 lbs / 6 818 kg per Pipe Rack x 3 per side |
| OPERATIONAL DIMENSIONS | |
| Max. Joint Length | 52 ft / 15.8 m |
| Max. Pipe Diameter | 24 in / 0.61 m |
| Max. Lift Load | 16 000 lbs / 7 272 kg |
| Floor Heights | 25 ft - 47 ft / 7.6 m - 14 m |
| Variable Ramp Angle | 43° - 50° |
| Floor Height Variance | ± 2 ft / ± 0.6 m |
| Pipe Range Designation | Single Range 2 or Range 3 |
| Wind Speed Sustained Max (based on prepared Lease) | 25 mph / 40 km/h |
| Wind Speed Gusts Max (based on prepared Lease) | 35 mph / 56 km/h |
| TRANSPORT DIMENSIONS | |
| Length | 66 ft 4 in / 20.2 m |
| Width | 9 ft 11 in / 3 m |
| Height | 10 ft / 3.1 m |
| Weight | See base weight |
| HYDRAULIC | |
| Pump | Single Parker 270 CC Load Sense |
| Max Pressure & Flow | 3 000 PSI, 120 GPM |
| Filtration | 5 Micro-Filtration Pressure and Return |
| Addition Filter and Cooling | Kidney Loop Cooling/Filtration |
| Hydraulic Control Valve | L90 or PVG Valve System |
| ELECTRICAL | |
| Motor | 100 HP 480 or 600 VAC Motor |
| Power Requirements | 150 A Service |
| Rating | 55°C Rated |
| Standard Controls | Remote Rig Floor Operators Panel |

DC441 Drilling Catwalk

Benefits

EASE OF MAINTENANCE | The use of modular and machined components enhances the ease and speed of maintenance.

REMOTE SUPPORT | Equipped with TechLink™ for remote equipment data logging and support.

DURABILITY | Designed for harsh environments with dual coolers and a kidney loop system for continuous oil cooling and filtering.

SAFETY | Eliminates access to pipe handling pinch points and pipe movements, enhancing safety.

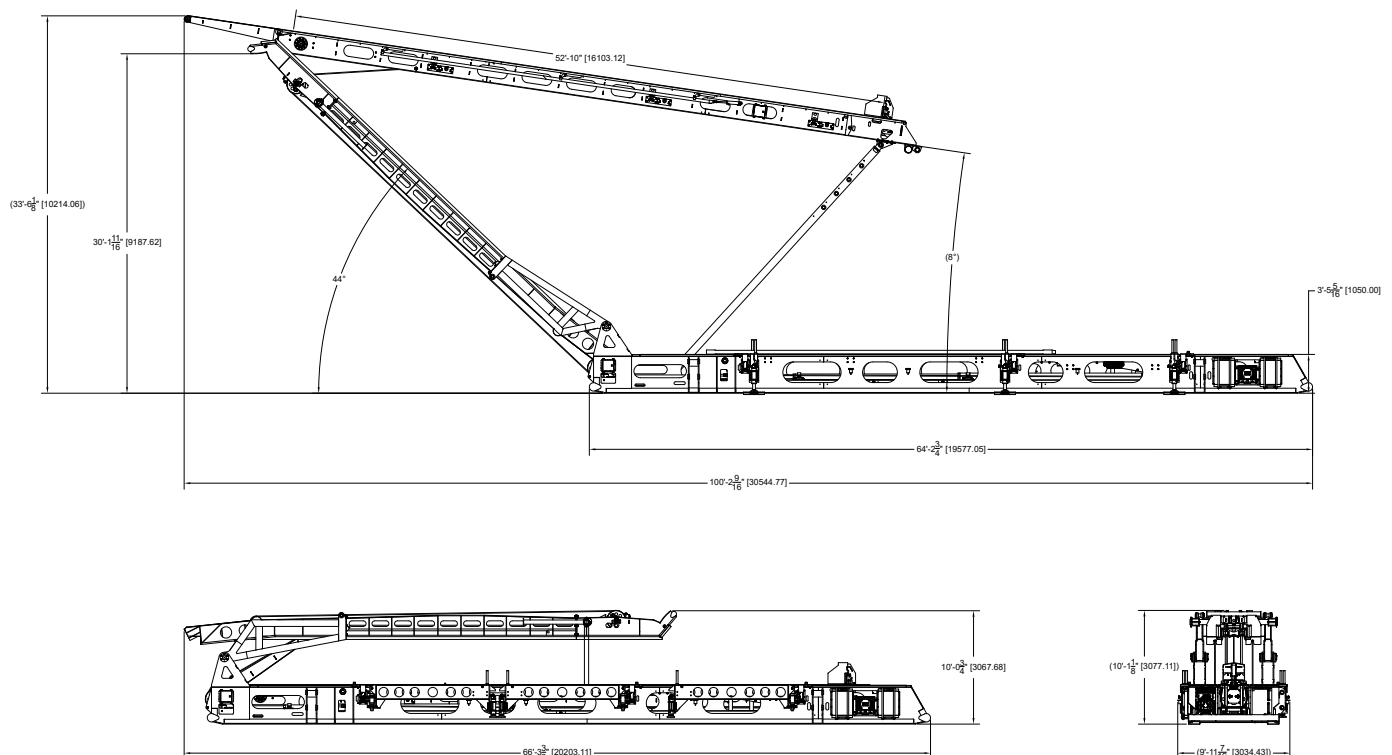
COST SAVINGS | Offers a competitive cycle time within industry standards and accommodates larger pipe diameters.

RISK REDUCTION | Features remote controls to operate the entire pipe handling sequence eliminating personnel from the danger zone.

EASE OF USE | Remote-controlled from the drill floor or ground, with integrated indexer, hydraulic pipe racks, kickers, and skate for seamless operation.

Key Features

- Carrier Floor Extension can be built to reach mousehole positions
- Automatic Safety Bars extend when carrier raises
- Carrier high-strength hardox top plate to prevent wear and promote pipe sliding
- Kicker Interlocks to prevent operation when not in the down position
- Skate can be used to pull back when lowering tubulars, 24 in (0.61 m) basket for casing
- Indexers interlocked to the carrier in the lower position as well as safety bars down
- Pipe Racks: 10 000 lbs (4 536 kg) capacity per rack
- Pinned lift arm positions to adjust tail angle of carrier
- Modular V-Door allows for floor-height changes with changing center sections of V-Door
- Base designed for winch loading on all truck / trailer configurations
- **Additional Options:** Integrated Automated Pipe Tubs, Hydraulic V-Door Setup, Hydraulic X-Y Walking System, Modular Ramp Heights and Optional Rear Desert Dolly Wheels



DC442

Drilling Catwalk



Product Description

The DC442 Catwalks are engineered for exceptional efficiency and safety in pipe handling. They boast a substantial lift capacity of 16 000 lbs (7 272 kg), making them ideal for heavy-duty tasks. These catwalks can accommodate pipe diameters up to 24 inches (0.61 meters), providing versatility for various applications. With a swift cycle time of 30 seconds up and 30 seconds down (subject to floor height), they rank among the fastest in the industry for their lift capacity. Safety is enhanced by 10-foot (3.1 meters) independent pipe racks that can be remotely raised and lowered, keeping personnel out of harm's way. The modular design allows all three sizes in the series to share common components, reducing costs and simplifying maintenance. Additionally, they can accommodate rig floor heights up to 47 feet (14 meters), offering flexibility for different operational setups. These features make the DC442 Catwalks a top choice for high-capacity and safety-focused operations.

Technical Specifications

| Drilling Catwalk DC442 | |
|--|--|
| Width | 96 in / 2.4 m (Pipe Rack Closed) |
| Deck Height | 42 in / 1.1 m |
| Length | 73 ft / 22 m |
| Base Unit Weight | 90 000 lbs / 40 823 kg |
| PIPERACKS | |
| Quantity | 3 – Drillers 3 – Off Drillers |
| Length | 10 ft / 3 m per side |
| Capacity | 15 000 lbs / 6 818 kg per Pipe Rack x 3 per side |
| OPERATIONAL DIMENSIONS | |
| Max. Joint Length | 68 ft / 20.7 m |
| Max. Pipe Diameter | 24 in / 0.61 m |
| Max. Lift Load | 16 000 lbs / 7 272 kg |
| Floor Heights | 25 ft - 47 ft / 7.6 m - 14.3 m |
| Variable Ramp Angle | 43° - 50° |
| Floor Height Variance | ± 2 ft / ± 0.6 m |
| Pipe Range Designation | 2 Range 2 or Single Range 3 up to 70 ft / 21 m |
| Wind Speed Sustained Max (based on prepared Lease) | 25 mph / 40 km/h |
| Wind Speed Gusts Max (based on prepared Lease) | 35 mph / 56 km/h |
| TRANSPORT DIMENSIONS | |
| Length | 66 ft 4 in / 20.2 m |
| Width | 9 ft 11 in / 3 m |
| Height | 10 ft / 3.1 m |
| Weight | See base weight |
| HYDRAULIC | |
| Pump | Single Parker 270 CC Load Sense |
| Max Pressure & Flow | 3 000 PSI, 120 GPM |
| Filtration | 5 Micro-Filtration Pressure and Return |
| Addition Filter and Cooling | Kidney Loop Cooling/Filtration |
| Hydraulic Control Valve | L90 or PVG Valve System |
| ELECTRICAL | |
| Motor | 100 HP 480 or 600 VAC Motor |
| Power Requirements | 150 A Service |
| Rating | 55°C Rated |
| Standard Controls | Remote Rig Floor Operators Panel |



DC442 Drilling Catwalk

Benefits

EASE OF MAINTENANCE | The use of modular and machined components enhances the ease and speed of maintenance.

REMOTE SUPPORT | Equipped with TechLink™ for remote equipment data logging and support.

DURABILITY | Designed for harsh environments with dual coolers and a kidney loop system for continuous oil cooling and filtering.

SAFETY | Eliminates access to pipe handling pinch points and pipe movements, enhancing safety.

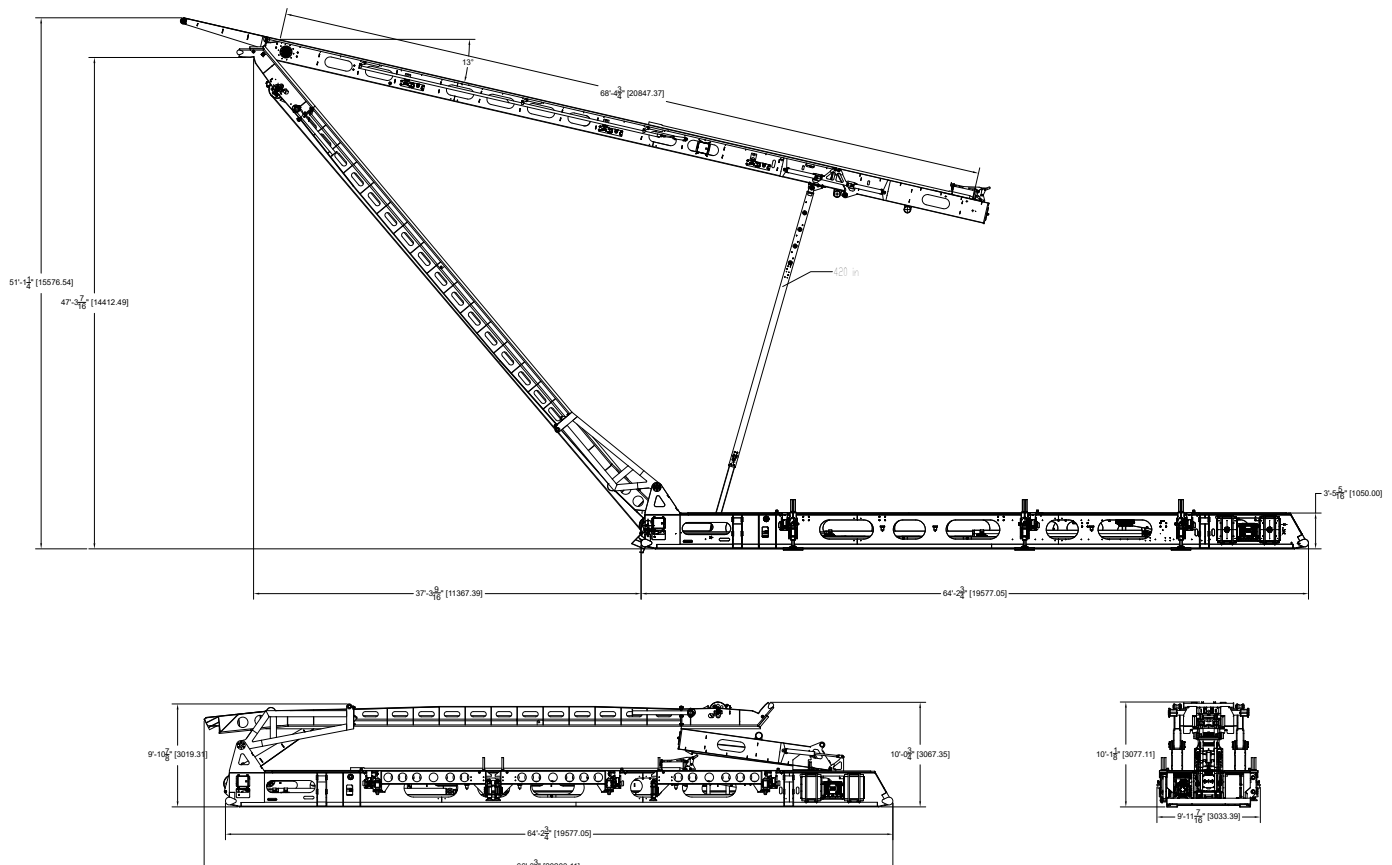
COST SAVINGS | Offers a competitive cycle time within industry standards and accommodates larger pipe diameters.

RISK REDUCTION | Features remote controls to operate the entire pipe handling sequence eliminating personnel from the danger zone.

EASE OF USE | Remote-controlled from the drill floor or ground, with integrated indexer, hydraulic pipe racks, kickers, and skate for seamless operation.

Key Features

- Carrier Floor Extension can be built to reach mousehole positions
- Automatic Safety Bars extend when carrier raises
- Carrier high-strength hardox top plate to prevent wear and promote pipe sliding
- Kicker Interlocks to prevent operation when not in the down position
- Carrier Extensions for DC442 and DC443 are compatible across all models
- Skate can be used to pull back when lowering tubulars, 24 in (0.61 m) basket for casing
- Indexers interlocked to the carrier in the lower position as well as safety bars down
- Pipe Racks: 10 000 lbs (4 536 kg) capacity per rack
- Pinned lift arm positions to adjust tail angle of carrier
- Modular V-Door allows for floor-height changes with changing center sections of V-Door
- Base designed for winch loading on all truck / trailer configurations
- **Additional Options:** Integrated Automated Pipe Tubs, Hydraulic V-Door Setup, Hydraulic X-Y Walking System, Modular Ramp Heights and Optional Rear Desert Dolly Wheels



DC443

Drilling Catwalk



Product Description

The DC443 Catwalks are engineered for exceptional efficiency and safety in pipe handling. They boast a substantial lift capacity of 16 000 lbs (7 272 kg), making them ideal for heavy-duty tasks. These catwalks can accommodate pipe diameters up to 24 inches (0.61 meters), providing versatility for various applications. With a swift cycle time of 30 seconds up and 30 seconds down (subject to floor height), they rank among the fastest in the industry for their lift capacity. Safety is enhanced by 10-foot (3.1 meters) independent pipe racks that can be remotely raised and lowered, keeping personnel out of harm's way. The modular design allows all three sizes in the series to share common components, reducing costs and simplifying maintenance. Additionally, they can accommodate rig floor heights up to 47 feet (14 meters), offering flexibility for different operational setups. These features make the DC443 Catwalks a top choice for high-capacity and safety-focused operations.

Technical Specifications

| Drilling Catwalk DC443 | |
|--|--|
| Width | 96 in / 2.4 m (Pipe Rack Closed) |
| Deck Height | 42 in / 1.1 m |
| Length | 84 ft / 25.6 m |
| Base Unit Weight | 115 000 lbs / 52 163 kg |
| PIPERACKS | |
| Quantity | 4 – Drillers 4 – Off Drillers |
| Length | 10 ft / 3 m per side |
| Capacity | 15 000 lbs / 6 818 kg per Pipe Rack x 4 per side |
| OPERATIONAL DIMENSIONS | |
| Max. Joint Length | 96 ft / 29.3 m |
| Max. Pipe Diameter | 24 in / 0.61 m |
| Max. Lift Load | 16 000 lbs / 7 272 kg |
| Floor Heights | 28 ft - 47 ft / 8.5 m - 15.3 m |
| Variable Ramp Angle | 43° - 50° |
| Floor Height Variance | ± 2 ft / ± 0.6 m |
| Pipe Range Designation | 3 Range 2 or 2 Range 3 up to 96 ft / 29.3 m |
| Wind Speed Sustained Max (based on prepared Lease) | 25 mph / 40 km/h |
| Wind Speed Gusts Max (based on prepared Lease) | 35 mph / 56 km/h |
| TRANSPORT DIMENSIONS | |
| Length | 87 ft / 26 m |
| Width | 9 ft 11 in / 3 m |
| Height | 10 ft / 3.1 m |
| Weight | See base weight |
| HYDRAULIC | |
| Pump | Single Parker 270 CC Load Sense |
| Max Pressure & Flow | 3 000 PSI, 120 GPM |
| Filtration | 5 Micro-Filtration Pressure and Return |
| Addition Filter and Cooling | Kidney Loop Cooling/Filtration |
| Hydraulic Control Valve | L90 or PVG Valve System |
| ELECTRICAL | |
| Motor | 100 HP 480 or 600 VAC Motor |
| Power Requirements | 150 A Service |
| Rating | 55°C Rated |
| Standard Controls | Remote Rig Floor Operators Panel |



DC443 Drilling Catwalk

Benefits

EASE OF MAINTENANCE | The use of modular and machined components enhances the ease and speed of maintenance.

REMOTE SUPPORT | Equipped with TechLink™ for remote equipment data logging and support.

DURABILITY | Designed for harsh environments with dual coolers and a kidney loop system for continuous oil cooling and filtering.

SAFETY | Eliminates access to pipe handling pinch points and pipe movements, enhancing safety.

COST SAVINGS | Offers a competitive cycle time within industry standards and accommodates larger pipe diameters.

RISK REDUCTION | Features remote controls to operate the entire pipe handling sequence eliminating personnel from the danger zone.

EASE OF USE | Remote-controlled from the drill floor or ground, with integrated indexer, hydraulic pipe racks, kickers, and skate for seamless operation.

Key Features

- Carrier Floor Extension can be built to reach mousehole positions
- Automatic Safety Bars extend when carrier raises
- Carrier high-strength hardox top plate to prevent wear and promote pipe sliding
- Kicker Interlocks to prevent operation when not in the down position
- Carrier Extensions for DC442 and DC443 are compatible across all models
- Skate can be used to pull back when lowering tubulars, 24 in (0.61 m) basket for casing
- Indexers interlocked to the carrier in the lower position as well as safety bars down
- Pipe Racks: 10 000 lbs (4 536 kg) capacity per rack
- Pinned lift arm positions to adjust tail angle of carrier
- Modular V-Door allows for floor-height changes with changing center sections of V-Door
- Base designed for winch loading on all truck / trailer configurations
- **Additional Options:** Integrated Automated Pipe Tubs, Hydraulic V-Door Setup, Hydraulic X-Y Walking System, Modular Ramp Heights and Optional Rear Desert Dolly Wheels

