

Drilling Riser

QTR™ 3500

The field proven Quick Turn Riser connector QTR™ 3500 (known as the HMH Clip Riser) is an efficient and safe heavy duty connector. The QTR™ type drilling riser offers the most efficient and HSSE friendly riser system due to the connector's simple locking system.

Product description

The QTR™ 3500 riser connector does not require any heavy tools. One person, with a steel bar, can lock or unlock the connector in less than 15 seconds. This, in addition to no pretension requirements and confirmed lock position, ensures superior HSSE performance. Replaceable p-line pins ensure the possibility to replace worn seal area on the rig, and thereby reduce the requirements to send the riser onshore for maintenance.

The track record of the riser shows potential to trip up to 8-10 riser joints per hour resulting in reduced time and cost for our clients and the oil companies.

The QTR™ 3500 riser system

- Can be adapted to suit required p-line configurations and up to 12 000 ft (3 658 m) water depth
- Comes with a full suite of tools and special joints
- Is both DNV and ABS certified

Benefits

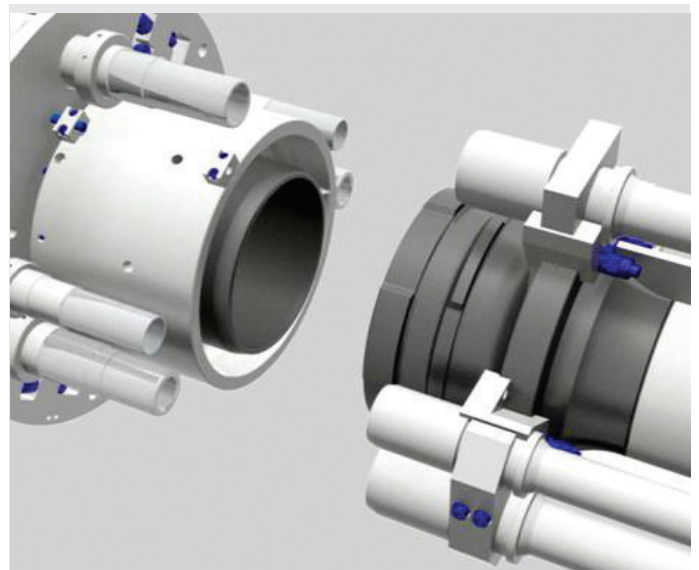
- Connector make-up without heavy tools in less than 15 seconds
- Positive lock indicator
- Removable p-line pins
- No pretension of the connector is required
- Eight p-lines may be integrated in the design
- High strength steels with reduced risk of HISC (Hydrogen Induced Stress Cracking)

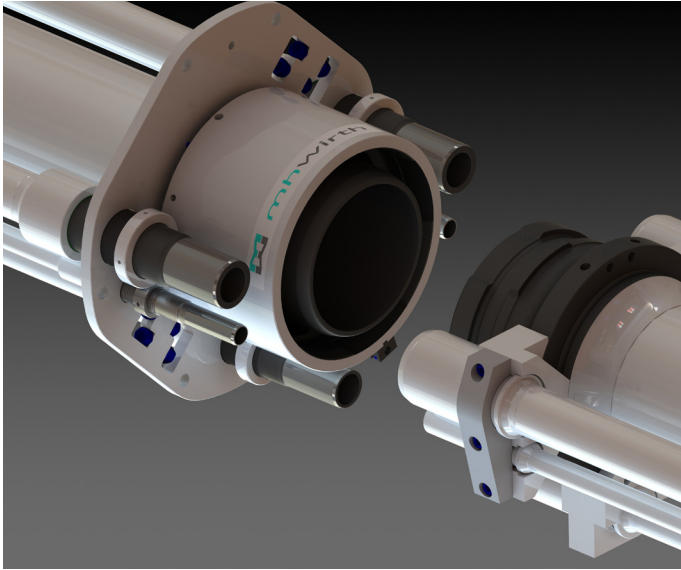
Tool Package

- Manual and hydraulic running tools
- Spider with integrated gimbal
- Pressure test tools
- Riser bay handling tool
- Riser tension rings for wireline or Direction Action Tensioner (DAT)
- Landing joint
- Soft hang off joint
- BOB Landing Assist Tool (BLAT) tool

Special Joints

- Telescopic joint with manual or hands-free gooseneck system
- Fill-up valve
- Termination assembly
- Diverter flange
- Upper end lower flex joints
- Spacer joints
- Upper flex joint
- Lower flex joint





Technical specifications

Operating load rating	3 500 kips (1 590 m.tons)
Drift diameter	18.76 in (479.05 mm)
Design life	20 years
Working pressure on K/C lines	15 000 psi (1 035 bar)
Number of p-lines, max.	8
Outer diameter of riser system, min.	54 in (1 371.60 mm)
Riser joint lengths	As per customer request
Outer diameter main pipe	21 in (533.40 mm)
Normal temperature range	-4 to +172°F (-20 to +121°C)
HT rating for K/C lines	up to 350°F (177°C)

Data is subject to confirmation by the manufacturer.