

Hydril Pressure Control K™

Pulsation Dampeners

Proven performance in large-volume, high-slurry pump applications

Product description

Manufactured to meet the most demanding large-volume, high-slurry pump applications, Hydril Pressure Control K pulsation dampeners offer outstanding performance for onshore and offshore drilling, airport fueling systems, tank truck and marine loading racks, fire water systems, sewage lines and other large-scale pulsation and surge-control applications.

Benefits

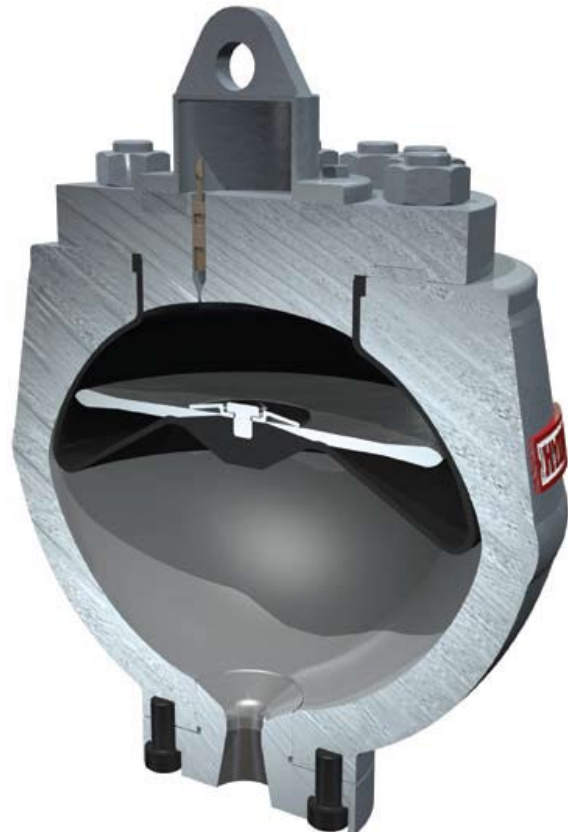
With many ANSI and API connections available standard, our K dampeners allow for quick installation, long service life and these additional benefits:

- Easy precharge and maintainance – charging assemblies are included free with every purchase
- Outstanding durability with standard hydrogenated nitrile elastomer
- At-a-glance precharge and bladder verification with sight glass option
- Reduced downtime with field-replaceable diaphragms

Key features

Introduced more than 50 years ago, Hydril Pressure Control K accumulators/dampeners have earned their reputation for dependability and durability. A torispherical body shape results in smoother flow and longer diaphragm life. A stabilizer disk enhances reliability. And a field-replaceable bottom plate eliminates costly shop repairs for greater efficiency and economy. In addition, all our K units:

- Are available in a variety of capacities, from 10 to 80 gallons
- Meet a variety of specifications – manufactured to DNV, CRN, CE, ATEX, ABS-CDS and ISO 9001
- Include ASME code stamping standard on most sizes, and pressure ratings



The Hydril Pressure Control K Advantage

Proven onshore and off, our K pulsation dampeners are highly effective under the toughest field conditions. All models are engineered for reliability, long life and ease of

operation. By manufacturing our own elastomers, we also offer unrivaled quality control as well as proven materials, compatibility and availability.

Technical specifications

10 (GAL) CAPACITY

Model No.	Width	Dimensions (inches)			Weight (lbs)
		Shell Height	Overall Height		
K10-275	23.00	23.75	31.10	440	
K10-1440	23.00	23.75	31.10	440	
K10-3000	23.00	23.75	31.10	950	
K10-5000	23.00	23.75	31.10	950	

20 (GAL) CAPACITY

Model No.	Width	Dimensions (inches)			Weight (lbs)
		Shell Height	Overall Height		
SS-20-275	24.00	20.75	27.00	450	
K20-1440	25.10	26.70	34.10	825	
K20-3000	28.50	28.15	35.53	2,145	
K20-5000	28.50	28.15	35.53	2,145	
20-7500	30.50	29.50	37.60	3,150	

80 (GAL) CAPACITY

Model No.	Width	Dimensions (inches)			Weight (lbs)
		Shell Height	Overall Height		
K80-275	38.29	37.31	44.69	2,575	
K80-720	38.29	37.31	44.69	2,575	
K80-1440	38.29	37.31	44.69	2,575	
K80-2000	41.50	38.82	46.20	3,150	
K80-3000	41.50	38.82	46.20	3,150	
K80-3705	41.50	38.82	46.20	3,150	

