

# Wirth TPK 2200 Mud Pumps

## For offshore and deep drilling

Since 1904, HMH has built the most reliable and service-friendly mud pumps available in the market.

### Product description

The 2200 hp mud pumps are designed for circulating drilling fluid under high pressure (up to 10,000 psi) down the drill string to support especially deep and offshore drilling operations.

Our precise equipment design and production processes reduce wear and tear, as well as, maintenance downtime and costs. Our precise machining makes shimming obsolete; the pump is ready to use after set-up and runs smoothly throughout the operation. Very low noise and vibrations levels increase the HSSE performance.

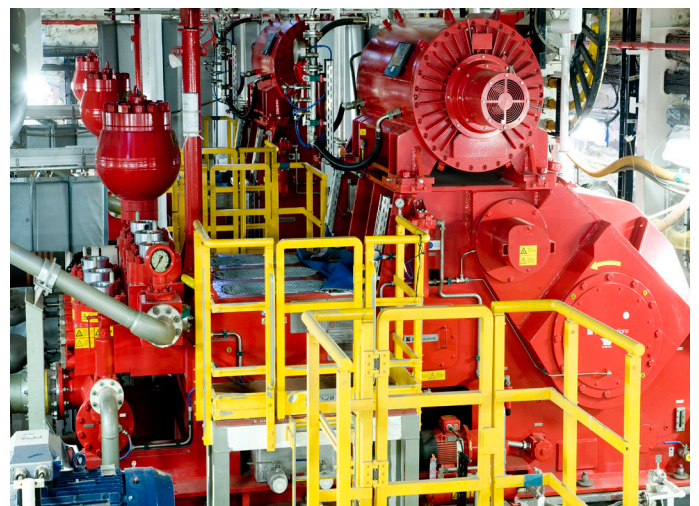
The light weight triplex pumps are extremely compact and require minimum space. Different skid, main motor and drive arrangements for rear- or top-mounted configurations meet all rig requirements. The mud pumps are accredited in accordance with API-7K.

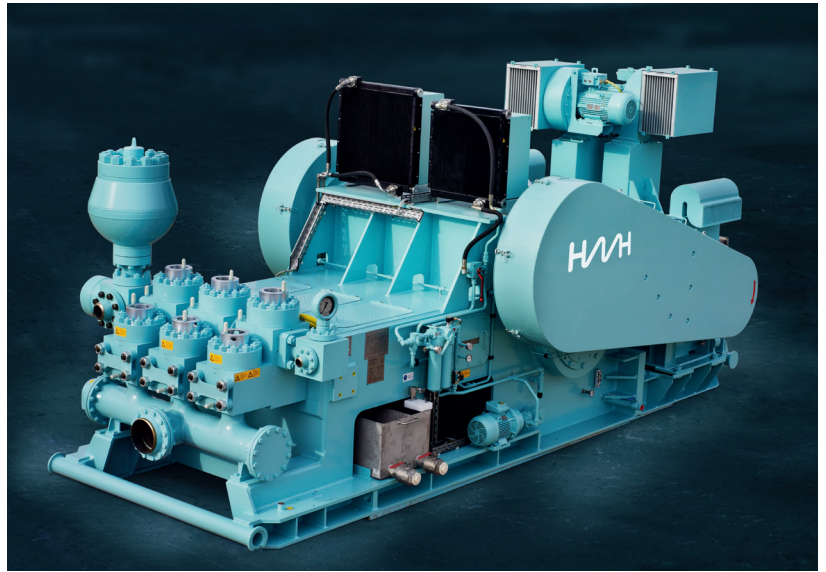
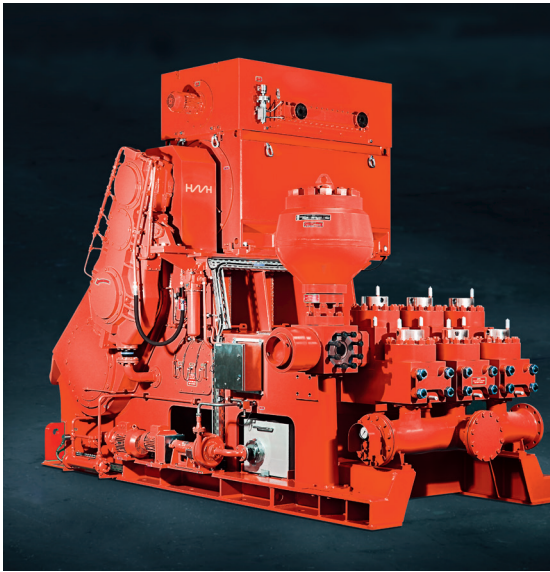
### Benefits

- Large variety of drives, motor and skid configurations to meet your needs
- 10-20 % less weight than pumps from other OEMs simplifying the required infrastructure on the rig and reducing the cost of rig configuration
- > 50 % lower sound level than motors from other OEMs
- Lowest Total Costs of Ownership with:
  - Hydraulic quick release system for fluid ends
  - Consumables and spare parts with HMH quality
  - More than 3 x higher uptimes with our unique gear drive

### Additional Options

- Unique gear drives with a lifetime of up to 50,000 hours, replacing less durable and louder chain or belt driven configurations (15,000 hours lifetime)
- Interchangeable AC water jacket motors can be used both on mud pumps and on drawworks. This keeps your spare parts stock at a minimum and reduces downtime in case of a replacement. These motors reduce noise further to less than 85 dB(A)
- Early detection of critical failures maximizes uptime
- Hydraulic quick release system for fast tensioning and replacement of fluid end parts without heavy tools. Necessitating less physical strength compared to tensioning of the screws via torque, this method improves safety and reduces maintenance downtime
- Third party certifications such as ABS and DNV possible
- Mud pump control system with HMI using a red dot system indicating visually faulty devices and guiding the user. Control via DCMS software and/or operator chair provides high flexibility and a local panel at the pump allows for easy maintenance handling





## Technical specifications

The table below is a selection of typical variants.

		TPK 2200-AC-TG-WJ	TPK 2200-AC-TG-WJ	TPK 2200-AC-RB-FV
Typical application		Offshore, mud circulation for ultra deepwater drillships and floaters, jackups, fixed platforms		Onshore, mud circulation for deep drilling
Discharge flow, max.		885 gpm (200.88 m <sup>3</sup> /h)		
Operating pressure, max.		10,000 psi (690 bar)	7,500 psi (517 bar)	
Standard main motor(s)		Single AC, water jacket		Double AC, forced ventilated
Standard drive configuration		Top mounted, gear drive		Rear mounted, belt drive, dual sided
Dry weight		104,716 lbs (47,500 kg)	102,515 lbs (46,500 kg)	106,924 lbs (48,500 kg)
Dimensions	Length	206 in (5,250 mm)	206 in (5,250 mm)	278 in (7,080 mm)
	Width	133 in (3,379 mm)	133 in (3,379 mm)	124 in (3,160 mm)
	Height	144 in (3,645 mm)	144 in (3,645 mm)	139 in (3,550 mm)

Data is subject to confirmation by the manufacturer.