

Sealytics™

BOP Advisor

Product description

The Sealytics BOP Advisor provides access to your control system data while maintaining cyber-security in an easily installed edge device. The system features real-time visualization, BOP systems status, and the ability to manage maintenance activities. With optional cloud connectivity, stakeholders onshore can view/retrieve BOP data that has been historically difficult to retrieve securely. Sealytics enables collaboration between onshore and offshore personnel, driving the quality, speed of decisions, and corrective actions resulting in reduced NPT.



Key features

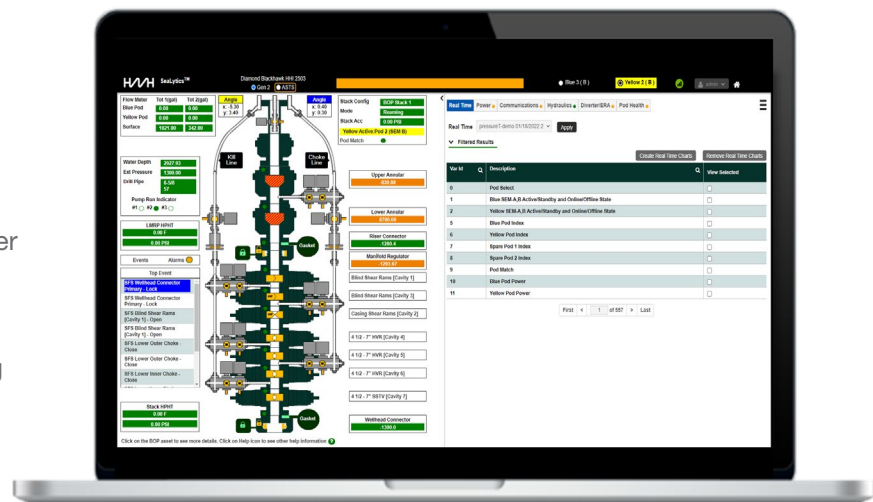
- Adheres to the highest cyber-security standards (IEC 62443-2-4)
- Designed to comply with BSEE well control rule (RTM and 21-day testing)
- On-rig, time-series trending, alarm management and visualization of component health
- OPC-UA Interface compatible
- Dual-redundant server system exceeding 99% availability
- Ample data storage capacity on rig and cloud
- Seamless, drop-in replacement for Gen2 Datalogger
- Enables Real Time Monitoring Centers via an industry standard WITSML interface
- Accessible to onshore personnel via engageDrilling
- Backbone for Condition Based Maintenance and BOP Analytics

Software features

BOP status - Ability to monitor the BOP status of components such as the annulars, rams, and C/K valves. The interface includes an interactive feature which allows users to retrieve more relevant information of the component selected.

Alerts/alarms - Active alerts/alarms and the corresponding severities are displayed in a user friendly interface. The alerts/alarms are categorized by their subsystem for easier navigation.

Trending, Playback, & Overlay Visualizations - Rapidly conduct ad-hoc trending to understand historical events which is crucial during rig down investigations. The playback feature is useful in scenarios where knowing the status of the BOP components are in relation to an analog signal (i.e pressure, temperature) is important. Lastly, an overlay feature exists to monitor the response signature of an analog signal in respect to an event to identify anomalous conditions.



Maintenance Tracker & Planner - Live tracking of component utilization and in-service activity for the configured assets which is a key enabler for Condition Based Maintenance (CBM) activities. Tool allows to configure calendar, utilization, in-service, or custom based maintenance activities. Maintenance activities can be managed in the tool and be exported via the reporting

functionality. Additionally, look-ahead reports can be generated to better plan the for upcoming in-between well maintenance tasks.

Data Download - Easily download alarms and events data for further analysis or reporting.

Connectivity

Sealytics provides the option to connect to a rig datalogger via OPC-UA and to the HMH Cloud. Onshore users have the ability to view a mirror image of Sealytics via the engageDrilling portal. Additionally, real-time monitoring centers can extract data in WITSML format to visualize in their tool of choice.

