

# HMH Land Market Solutions

## Drilling Equipment

HMH provides customized and integrated solutions for the land oil and gas drilling markets. We design, manufacture, commission and service drilling systems for conventional and harsh environment land drilling rigs. We can tailor our equipment and features in accordance with your project requirements.

Since 1895, we have offered our customers extensive oilfield experience with our well-known Wirth™ products and we have a history of more than 1 000 Pyramid™ masts and derricks since 1956. Our standardized, reliable and well-proven equipment is accredited in accordance with API. HMH has a global span covering five continents with offices in 12 countries. Our 24/7 Global Operational Support provides you with the support you need to keep your rigs operational.

### Drawworks

- Single gear, two gear, multi gear
- Available from 1 000 up to 4 500 hp for high hoisting loads
- With AC or DC main drive configuration
- Compact and light-weight design

### Top Drives

- High-torque top drives with compact and light-weight design
- Hook-load ratings from 350 up to 1 000 short tons (318 – 907 mT)
- Electrically or hydraulically driven
- With one or two motors
- Operating pressure: 5 000 or 7 500 psi (345 or 517 bar)

### Mud Pumps

- High-pressure triplex design with rear or top mounted skid arrangement
- Input power ratings from 800 up to 2 200 hp
- Belt, chain or gear-driven configurations
- Operating pressure: 5 000 or 7 500 psi (345 or 517 bar)
- With AC or DC drive motor configurations



### Rotary Tables

- Electrically or hydraulically driven
- Openings from 27 ½ in up to 49 ½ in
- Static load capacities from 500 up to 750 short tons
- Direct drive for compact design
- With AC or DC drive motor configurations

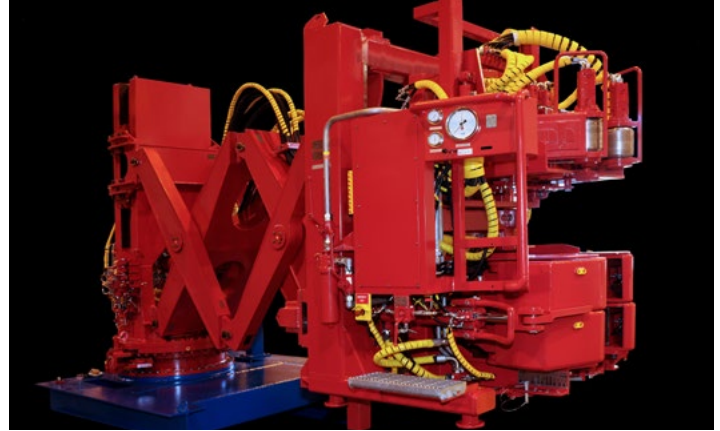
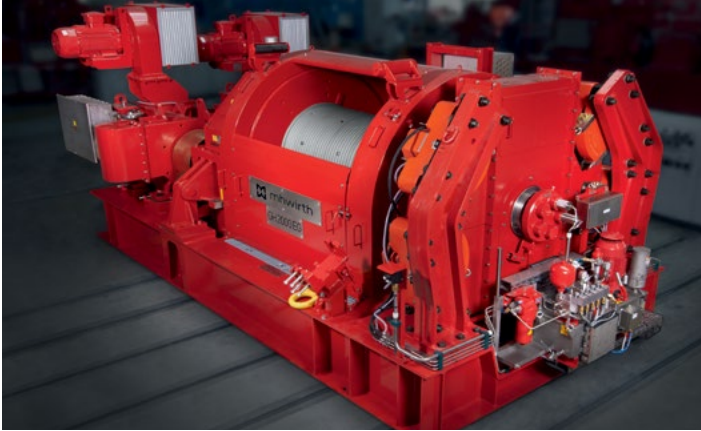
### Hydraulic Roughnecks

- Pedestal mounted
- Compatible with third party socket designs
- RN series for make-up/break-out stabilizers
- RN 85 & 136

### Mast and Sub Structures

- Well-known and proven Pyramid™ design
- Structures according to your specifications and industry standard
- BOP handling systems with a capacity from 55 to 132 short tons (50 to 120 mT)
- New builds and overhaul; installation services, modifications and upgrades
- Derrick inspections for CAT III, CAT IV





## Technical specifications

	Rig 1500 HP (325 – 400 short tons capacity)	Rig 2000 HP (500 short tons capacity)	Rig 3000 HP (650 – 750 short tons capacity)
<b>Drawworks</b>	<b>Single gear drawworks GH 1500 EG-AC-1G</b>	<b>Single gear drawworks GH 2000 EG-AC-1G</b>	<b>Single gear drawworks GH 3000 EG-AC-1G</b>
Rig performance rating, max.	1 500 hp (1 190 kW)	2 000 hp (1 491 kW)	3 000 hp (2 237 kW)
Lifting capacity fourth layer	365 short tons (730 lbs x 1 000) with 10 lines	502 short tons (1 004 lbs x 1 000) with 12 lines	685 short tons (1 370 lbs x 1 000) with 12 lines
<b>Mud pumps</b>	<b>TPK 1600 AC-RB</b>	<b>TPK 1600 AC-RB</b>	<b>TPK 2200 AC-RB</b>
Power rating	1 600 hp (1 190 kW)	1 600 hp (1 190 kW)	2 200 hp (1 640 kW)
Operating pressure, max.	5 000 psi (345 bar)	7 500 psi (517 bar)	7 500 psi (517 bar)
Discharge flow, max.	826 gpm (187 m <sup>3</sup> /h)	826 gpm (187 m <sup>3</sup> /h)	826 gpm (187 m <sup>3</sup> /h)
<b>Rotary tables</b>	<b>RTSS 37 ½ – direct drive</b>	<b>RTSS 37 ½ – direct drive</b>	<b>RTSS 49 ½ – direct drive</b>
Static load capacity, max.	500 short tons (1 000 000 lbs)	650 short tons (1 300 000 lbs)	800 short tons (1 600 000 lbs)
Power rating	1 150 hp (857 kW)	1 150 hp (857 kW)	1 150 hp (857 kW)
Opening size	37.5 in (953 mm)	37.5 in (953 mm)	49.5 in (1 257mm)
<b>Top drives</b>	<b>PTD 350-AC-1M</b>	<b>PTD 500-AC-1M</b>	<b>DDM 750-AC-1M</b>
Hook load	to 500 short tons (1 000 000 lbs)	500 short tons (1 000 000 lbs)	750 short tons (1 500 000 lbs)
Continuous torque, max.	40 800 lbf-ft (55 300 Nm)	52 360 lbf-ft (71 000 Nm)	77 443 lbf-ft (105 000 Nm)
Power rating	800 hp (596 kW)	1 250 hp (932 kW)	1 600 hp (1 193 kW)
	<b>PTD-500-AC-1M</b>	<b>DDM 650-AC-1M</b>	<b>DDM 1000-AC-2M</b>
Hook load	500 short tons (1 000 000 lbs)	650 short tons (1 300 000 lbs)	1 000 short tons (2 000 000 lbs)
Continuous torque, max.	40 800 lbf-ft (55 300 Nm)	61 600 lbf-ft (83 800 Nm)	87 000 lbf-ft (118 000 Nm)
Power rating	1 150 hp (858 kW)	1 150 hp (858 kW)	2 300 hp (1 715 kW)
<b>Mast and substructures</b>	<b>Pyramid™ design</b> <ul style="list-style-type: none"> <li>■ Fast moving land rig</li> <li>■ Box-on-box sub</li> <li>■ Desert trailer rigs</li> <li>■ Telescoping mast</li> <li>■ Helicopter rigs</li> </ul>	<b>Pyramid™ design</b> <ul style="list-style-type: none"> <li>■ Swing-up mast and sub</li> <li>■ On-floor cantilever mast</li> <li>■ Box-on-box sub</li> </ul>	<b>Pyramid™ design</b> <ul style="list-style-type: none"> <li>■ Swing-up mast and sub</li> <li>■ On-floor cantilever mast</li> </ul>

Data is subject to confirmation by the manufacturer.