

Hydril Pressure Control FSP™ 28" 2000-psi Diverter

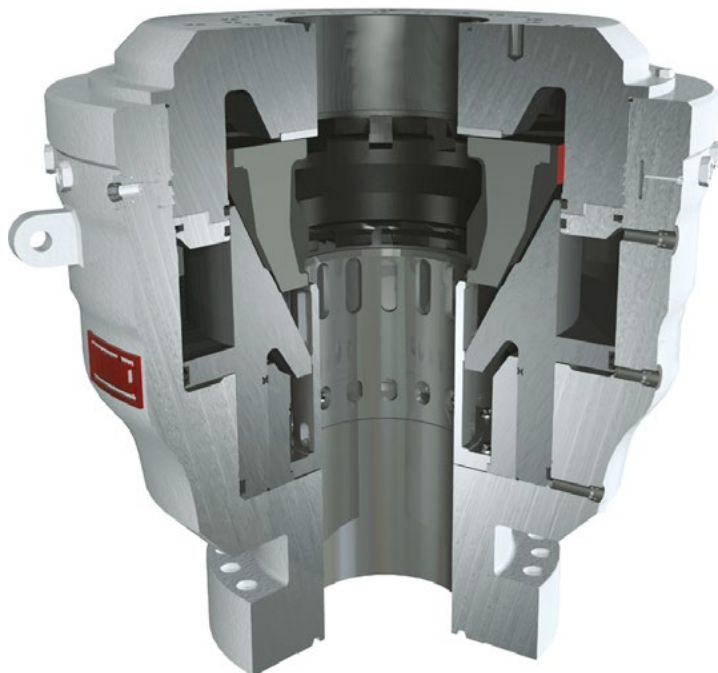
Simplicity maximizes reliability

Product description

The Hydril Pressure Control FSP™ 28-2000 (Flow Safe Platform) is designed for use on platform and jackup drilling rigs. It serves a dual purpose: as a diverter while the upper hole is being drilled and as a blowout preventer after the conductor pipe has been cemented. Because no diverter is simpler than the FSP, none is safer.

Benefits

Simple, state-of-the-art design, high-strength materials and rugged construction all work together on the FSP 28-2000 diverter/BOP to provide exceptional safety performance. As your last line of defense against a kick on a stationary rig, the FSP satisfies the time-tested Occam's Razor...the simplest solution is always the best.



Key features

Simplicity is found throughout the FSP. On command, one hydraulic signal to one component reroutes the flow of a well kick. With the integral valve design, the piston movement closes the upward flow path and opens the vent line(s) for well fluid. Its single control eliminates the need for external valves, actuators and interconnecting control circuits when installed below fill and flow lines. Just as simplicity enhances safety, so do these features:

- A vent line that is always open and clear. There are no valves to obstruct the vent line
- Elimination of stagnant vent line space. As a result, there is no caking of solids or formation of ice that could obstruct or shut off the flow
- An annular packing unit that closes on an open hole without use of an insert cartridge that can be overlooked or installed improperly
- The annular packing unit can close around any object that can be drifted through its 28" bore, from drill pipe to tooling
- Stripping capability. The FSP annular packing unit permits stripping of pipe into the hole while diverting well fluids
- A replaceable wear plate that eliminates metal-to-metal contact between the packing unit inserts and the BOP head
- A bolted-in inner sleeve that eliminates the need for weld repair and is field-replaceable
- API RP64 compliant

Technical specifications

System of Measure	U.S.	Metric
Bore Size	28.00"	711 mm
Working Pressure	2,000 psi	138 bar
Closing Pressure	1,500-3,000 psi	103-207 bar
Packing Unit Operating Range	28.00" to CSO	711 mm to CSO
Closing Chamber Volume – Total	90 gal	341 L
Opening Chamber Volume	75 gal	284 L
Weight (FSP only)	59,900 lbs	27,180 kg
Vent Outlet Size (Nominal)	12.00-16.00"	–
Flowline Outlet Size	As Required	As Required
Top Connection	MSS 34 Class 1440 Studded	–
Bottom Connection	HSQC or Flange	–
Across Lifting Eyes	92.25"	2,343 mm
Diverter Minimum Bore	28.00"	711 mm
Bell Nipple Minimum Bore	As Required	As Required
FSP Height (With Top Adaptor)	95.75"	2,432 mm
FSP Bottom to Outlet CL*	25.50"	648 mm
FSP Height	79.00"	2,007 mm
FSP CL to Outlet Face*	45.25"	1,150 mm

